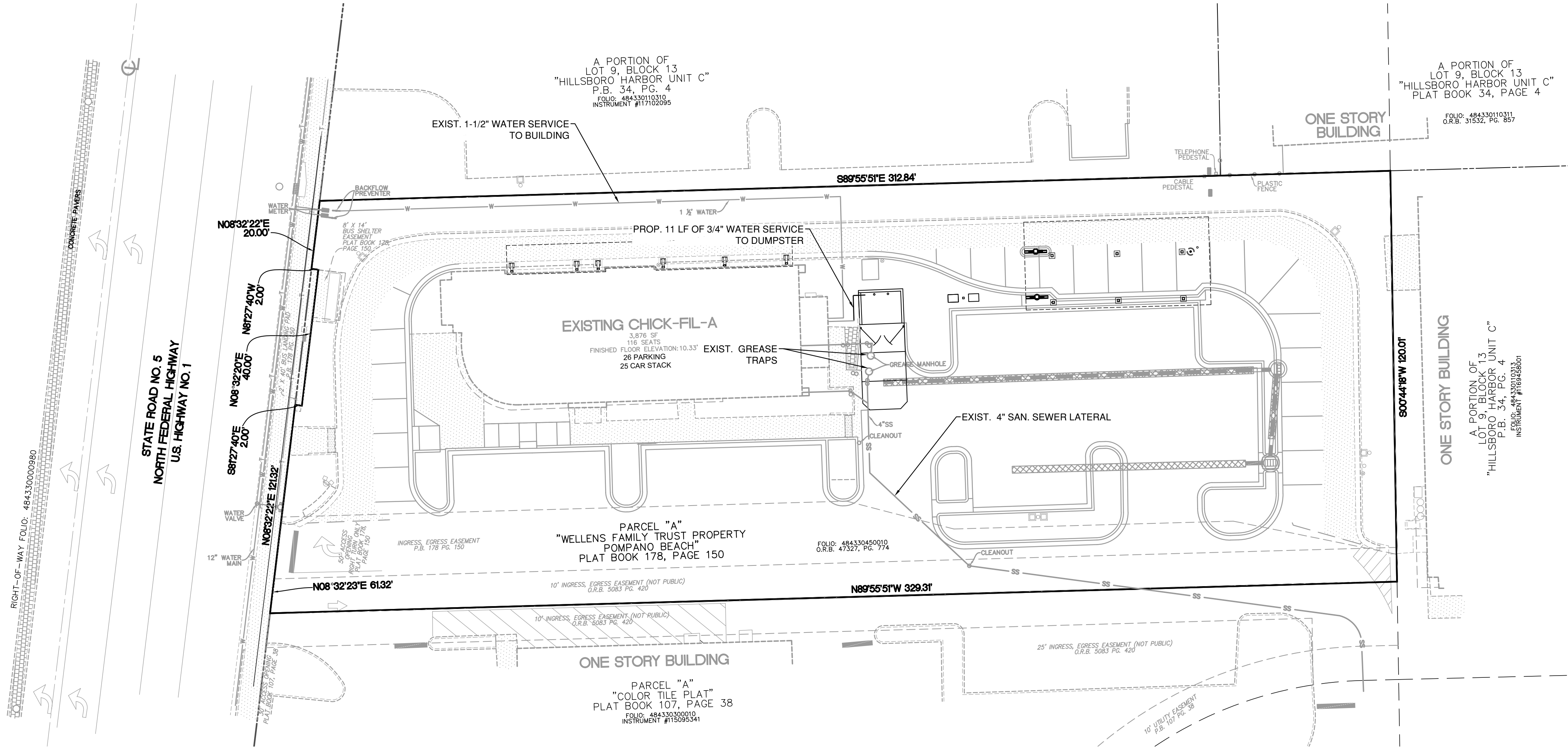
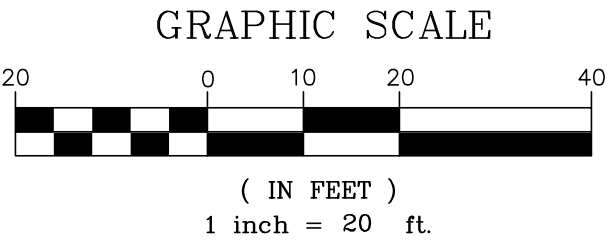


THIS DOCUMENT, TOGETHER WITH THE CONCEPTS AND DESIGN PRESENTED HEREIN, IS AN INSTRUMENT OF SERVICE. IT INTENDS ONLY FOR THE SPECIFIC PURPOSE AND CLIENT FOR WHOM IT WAS PREPARED. REUSE OF ANY UNPUBLISHED REVISION OR THIS DOCUMENT WITHOUT WRITTEN AUTHORIZATION AND ADAPTATION BY BOWMAN CONSULTING SHALL BE WITHOUT LIABILITY TO BOWMAN CONSULTING.

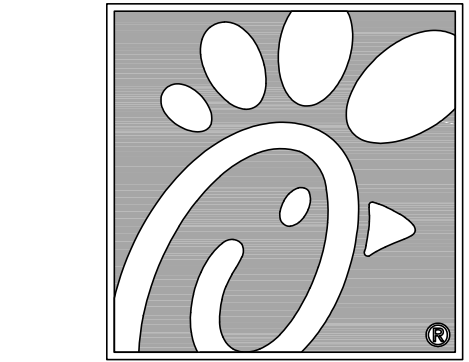


GENERAL UTILITY NOTES

- CONTRACTOR SHALL PROTECT ALL EXISTING UTILITIES AND IS RESPONSIBLE TO REPAIR ANY DAMAGE TO EXISTING UTILITIES DURING CONSTRUCTION AT NO COST TO THE OWNER.
- ALL UTILITIES ARE SHOWN FROM INFORMATION GATHERED AND SHOULD NOT BE USED AS EXACT. CONTRACTOR SHALL VERIFY EXACT DEPTHS AND LOCATIONS PRIOR TO UTILITY INSTALLATION.
- CONTRACTOR SHALL CONTACT THE APPROPRIATE UTILITY COMPANY FOR INSTALLATION AND SPECIFICATION REQUIREMENTS.
- ALL PIPE MATERIALS SHALL COMPLY WITH LOCAL REGULATIONS AND STANDARDS.



LEGEND	
PROP. ASPHALT DRIVE	EX. CONCRETE PAVEMENT / SIDEWALK
PROP. CONC. SIDEWALK	EX. CONCRETE D CURB
PROP. CONC. PAVEMENT	EX. CONCRETE F CURB
PROP. TYPE "F" CURB	EX. EDGE OF SIDEWALK
PROP. CATCH BASIN	EX. SIGN
PROP. CURB INLET	EX. STORM INLET
PROP. STORM SEWER	EX. SANITARY SEWER
	EX. WATER
	EX. COMMUNICATIONS
	EX. STORM SEWER
	EX. TREES

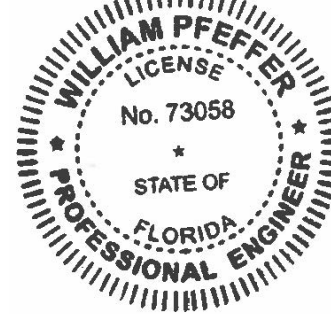


5200 Buffington Rd.
Atlanta Georgia,
30349-2998

Bowman

Certificate of Authorization License No. 30482
610 SE 7th St, Suite 300
Fort Lauderdale, FL 33316
Phone: (954) 314-6466
www.bowman.com
© 2021 Bowman Consulting Group Ltd

Seal



WILLIAM PFEFFER, P.E.
LICENSE NO. 73058
8/13/2021

CHICK-FIL-A
POMPANO BEACH
2250 NORTH FEDERAL HIGHWAY
POMPANO BEACH, FL 33062

FSU# 2483

REVISION SCHEDULE	
NO.	DATE
1	8/13/2021

DESCRIPTION

CURRENT DESIGN	2021-005
NOTE APPLIED	
PROJECT #	010014-01-138
PRINTED FOR	PERMIT
DATE	8/13/2021
DRAWN BY	ST

Don't contained on this sheet. For general information only. For detailed information, refer to the project description.

UTILITY PLAN

SHEET NUMBER

1.0

P&Z
PZ21-16500001
9/22/21